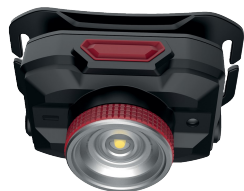


## Rechargeable LED focus headlamp

*Integrated red LED and adjustable optics.*



### Benefits

- The adjustable optics enable the beam to be adjusted according to activity.
- The red LED avoids glare when several people are working together.
- Anti-chafe headband for improved hold.

### Norms

☉ IP 20

### Compliance marks



**GENERAL INFORMATION**

**Description**

Rechargeable head torch, adjustable beam with integrated red LED.

**Technical details**

Power: 5 W.

Light power white LED (lm): 450 (mode: 100 %) - 150 (mode: 30 %) - 10 (mode: 2 %).

Red LED: mode ON or flash.

Colour temperature: 4000 K.

Colour Rendering Index: > 80.

Beam: adjustable from 40° to 120°.

Materials: polycarbonate and aluminium.

Operating temperature (°C): -20 to +40.

Base can be rotated 60°.

White LED operating time: 3 hours (mode: 100 %) - 10 hours (mode: 30 %) - 70 hours (mode: 2 %).

Red LED operating time: 15 hours (mode: ON) - 20 hours (mode: Flash).

Charging time: 4 hours.

Lithium battery 3.7 V 2000 mAh.

Charger input voltage.

Supplied with anti-chafe elastic headband.

Headband size: from 12 cm to 22 cm.

Supplied with USB / USB-C charging cable, 1 m long.

Weight (g) : 100.

Dimensions (cm) : 6 x 4 x 3.5.

**Advices**

Recharge and discharge the battery completely for a better working lifetime.

**Application(s)**

Ideal for inspection and safety lighting.

**Instructions**

1. Press once: white LED mode 2 %.
2. Press twice: white LED mode 30 %.
3. Press three times: white LED mode 100 %.
4. Press four times: red LED mode ON.
5. Press five times: red LED flash mode.
6. Presser six times: OFF.
7. Memory function after two seconds.
8. To adjust light beam, turn the torch from left to right.

**LOGISTIC INFORMATION**

**Packaging**



**Carton box**

Height (cm) : 13,3  
Length (cm) : 9,5  
Depth (cm) : 5,3  
Net weight (kg) : 0,12  
Gross weight (kg) : 0,16



**Outer package 1**



**Carton box**

Height (cm) : 17,5  
Length (cm) : 21,5  
Depth (cm) : 20  
Net weight (kg) : 1,92  
Gross weight (kg) : 2,02



x 12.00

**Outer package 2**



**Carton box**

Height (cm) : 37,5  
Length (cm) : 41,5  
Depth (cm) : 23  
Net weight (kg) : 7,7  
Gross weight (kg) : 8,7



x 48.00

**Outer package 3**



**Pallet**

Height (cm) : 100  
Length (cm) : 120  
Depth (cm) : 80  
Net weight (kg) : 200,1  
Gross weight (kg) : 215,1



x 1104.00